



Sandy Park

CONFERENCES & MEETINGS

WWW.SANDYPARK.CO.UK | 01392 427427 | events@sandypark.co.uk



WELCOME TO SANDY PARK



Sandy Park is Exeter's multi award-winning Conference, Banqueting and Events Centre and home to 2020 Gallagher Premiership and Heineken Champions Cup winners, the Exeter Chiefs.

The state-of-the-art facility has the flexibility to host everything from large exhibition events to small meetings, all within easy reach of the vibrant cathedral city of Exeter and the stunning scenery of the Exe Estuary, East Devon and beyond.

Conveniently situated by junction 30 of the M5 and only ten minutes from Exeter International Airport and railway stations, we pride ourselves in being one of the South West's most accessible Conference Centres. With our excellent in-house planning, operational and catering teams, here at Sandy Park we take pride in creating successful events for all our clients, ensuring the space you have is tailored to your every individual need, enhancing the success and overall enjoyment of your event.





OUR FACILITIES

One of the key attractions at Sandy Park is the variety of versatile and dynamic spaces we offer, including the impressive Exeter Suite which has hosted a number of notable events, including exhibitions, award shows, charity gala evenings and Exeter Rugby Club's annual End of Season Dinner.

Our top floor suites, the Chiefs, Estuary and Baxter offer striking and unrivalled views of the Sandy Park pitch and stadium, as well as the stunning East Devon countryside.

For smaller meetings, our numerous Seminar Suites are ideal and all have moveable walls, enabling various configurations and capacities. We also offer on-site catering, provided by our passionate, talented and highly-qualified team, who provide top quality cuisine and source the best in local Westcountry produce. Whether it's a hot buffet for 100 conference delegates, light refreshments for a small meeting or a celebratory three-course gala dinner for 600, we can offer a variety of menus to suit any budget, theme, or dietary requirement.

OUR SUITES ARE EQUIPPED WITH THE LATEST TECHNOLOGY INCLUDING:



HD LASER PROJECTORS

State-of-the-art Panasonic SOLID SHINE laser projectors give unrivalled impact to any event or presentation.



SCREENS

Our laser projectors are paired with 4m x 2.25m screens. All suites are equipped with plasma screens from 42" to 80".



HD CAMERA

The Exeter Suite has a HD camera which enables real-time streaming.



WIFI

Free high speed WiFi throughout the building.



VMIX

LIVE VIDEO STREAMING SOLUTION

vMix is a complete live video production software solution with features including LIVE mixing, switching, recording and LIVE streaming of video.



PA SYSTEM & MICROPHONES

Each of our main suites has its own integrated PA system.



IR HEARING LOOP

Infrared hearing systems are fitted throughout the venue to aid communication with those with hearing impairments.

EXETER SUITE

The crown jewel within the Sandy Park complex, the spacious and light-filled Exeter Suite, boasting two private bars - is the largest space on site. Featuring the latest in audio-visual technology including: four high-definition data projectors with 4.4m wide screens, two additional projector screens, five large plasma screens and an internal PA system, with a selection of microphones to suit different requirements.

One of the most interesting and practical features of this suite is that it can be split into two rooms by a floor to ceiling partition wall. Each of these rooms can comfortably seat up to 390 guests. This convenient feature lends itself to meetings or events that require either a separate breakout space, networking zone, exhibition area or catering space.

Features:

- 4 HD Laser projectors (7200 Lumens) paired with 4m x 2.25m screens
- 2 Projector screens
- 5 Plasma screens
- HD Camera
- vMix Live Video Streaming

Dimensions:

37.7m x 17.4m (674m²)
Split into two rooms -
Dimensions: 18.8m x 17.4m
Ceiling height: 2.85m (max 3.5m)

Theatre Style: max 825
Dinner Style: max 600
Cabaret Style: max 487



EXETER SUITE



COUNTY SUITE

The County Suite, situated on the first floor, offers natural day-light, air-conditioning and a large private bar.

Conveniently situated adjacent from the Exeter Suite, the County is an ideal room to provide either a reception, break-out space, exhibition zone or catering area for any event taking place in the Exeter Suite.

Features:

- A HD Laser projectors (7200 Lumens)
Laser projector (4m x 2.25m)
- 3 Plasma screens
(1 x 75", 1 x 60", 1 x 42")
- vMix Live Video Streaming

Dimensions:

L-Shape Room -
19.6m (max) / 14.1m (min) x 17.6m (296m²)
Theatre Style: max 240
Dinner Style: max 240
Cabaret Style: max 160

COUNTY SUITE



ESTUARY SUITE

The Estuary Suite is our second largest room and is the perfect setting for any event from a business conference to a private dinner.

Its open, spacious design and private bar provides a relaxing space for hosting guests at any meeting, conference, or networking event. The room offers exceptional views over the Sandy Park pitch, as well as across to the Exe Estuary. It also features a moveable wall which can split the room lengthways, allowing for a total of six seminar suites which can accommodate a maximum of 15 people in each - a fantastic space should you require several breakout or syndicate rooms.

Features:

- 2 HD Laser projectors (7200 Lumens) paired with 4m x 2.25m screens
- 4 Plasma screens (1 x 75", 1 x 60", 2 x 42")
- vMix Live Video Streaming

Dimensions:

25.0m x 17.5m (315m²)
Theatre Style: max 327
Dinner Style: max 340
Cabaret Style: max 219

ESTUARY SUITE





CHIEFS SUITE

The Chiefs Suite, with its far-reaching views of the pitch, is situated adjacent to the Estuary Suite and is an excellent room to provide a reception, registration or breakout area for any event taking place in the larger Estuary Suite.

Capable of comfortably seating a maximum of 220 guests, it not only offers its own private bar, but has seven seminar suites in close proximity, making it an ideal location for any potential breakout areas.

Features: 1 HD Laser projector (7200 Lumens)
paired with 4m x 2.25m screen
3 Plasma screens (1 x 75", 2 x 60")
vMix Live Video Streaming

Dimensions:

14.7m x 17.5m (273m²)
Theatre Style: max 172
Dinner Style: max 220
Cabaret Style: max 138



CHIEFS SUITE

BAXTER SUITE

The popular Baxter Suite - named in connection with the famous Exeter Rugby family - offers unrivalled views of our stadium grounds and across the scenic vista of the Exe Estuary and beyond.

Positioned on the second floor, the Baxter has a maximum capacity of 60 and is ideal for a wide range of conference or meeting requirements.

There is a PA system with microphones installed, plus an 80" plasma screen. Apple TV is also available in this suite, enabling a wireless link from devices to the screen.

Features:

- 80" Plasma screen - HDMI, VGA and 3.5mm audio connections to the screen

Dimensions:

15.0 m x 5.0m (75m²)

Theatre style: max 60

Boardroom style: max 30

Cabaret style: max 30



BAXTER SUITE



SEMINAR SUITES

Enjoying some of the greatest views of the Sandy Park pitch and local countryside, choose from one of our 18 Seminar Suites, nine of which have movable walls, guaranteed to create a meeting to remember.

With the capability to have a variety of room configurations and capacities, each of our suites offer LED screens, WIFI and access to your own personal terrace within the stadium.

Features:

- Large plasma screens - HDMI, VGA and 3.5mm audio connections

Dimensions:

min 18m²/max 74m²
Theatre style: max 60
Boardroom style: max 34
Cabaret style: max 30



SEMINAR SUITES

BOARDROOM

Adorned with memorabilia from the rise of Exeter Rugby Club, this room is perfect for those wishing to stage a smaller, more intimate event.

In addition to the striking boardroom table, which acts as the ideal centrepiece, this room has the latest in video conferencing technology and an 82" plasma screen.

Available for up to 24 delegates or guests.

Features:

- 80" Plasma screen - HDMI, VGA and 3.5mm audio connections
- Apple TV
- Skype Facility

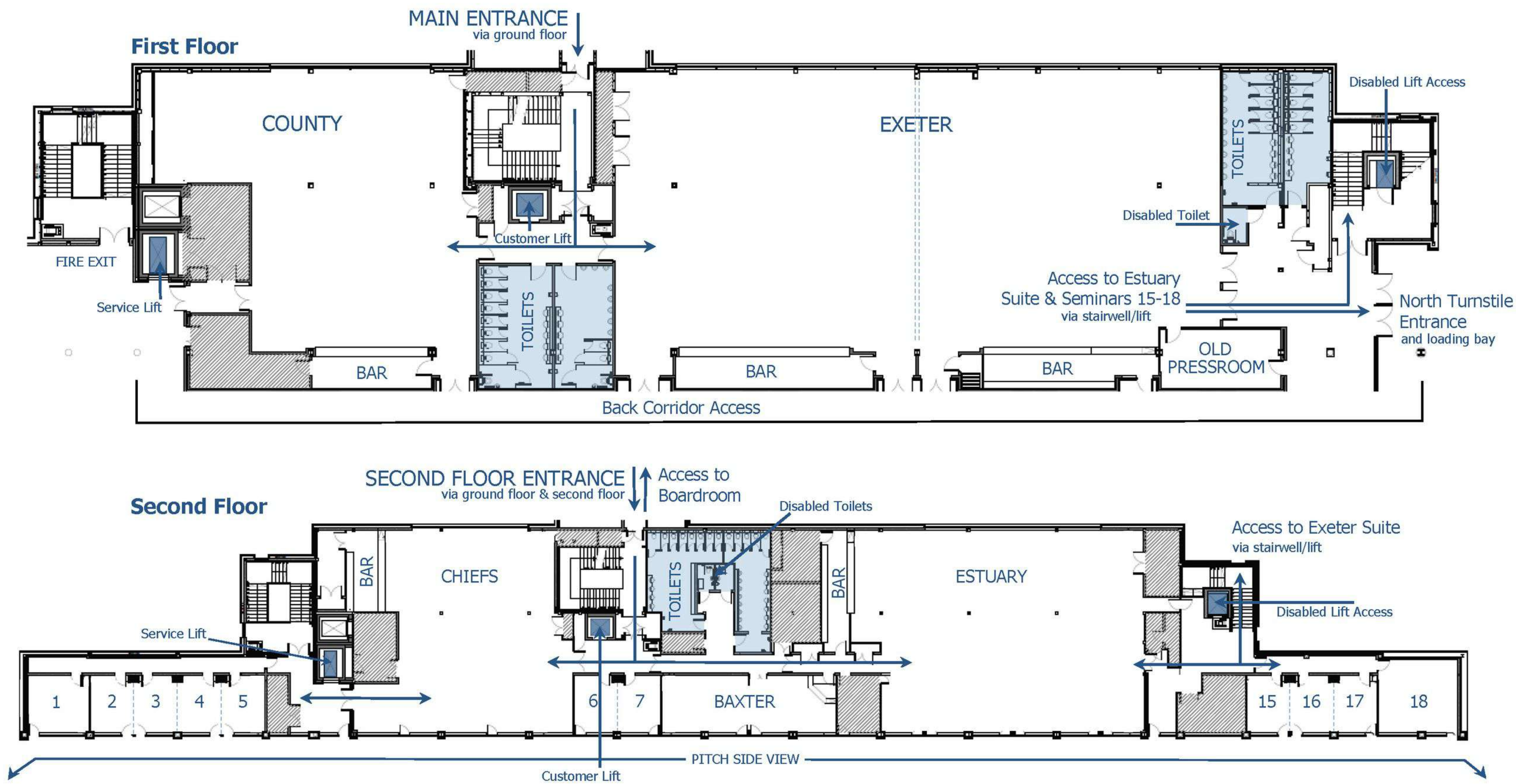
Dimensions:

10.8m x 4.5m (49m²)
Boardroom style: max 24



BOARDROOM

SANDY PARK FLOOR PLAN



ROOM CAPACITIES AND DIMENSIONS



First Floor

Second Floor

Suite	Exeter 1&2	Exeter 1	Exeter 2	County	Estuary	Chiefs	Baxter	Seminar Suite	Boardroom
Theatre	825	390	390	240	327	172	60	15+	-
Cabaret	487	248	248	140	219	138	30	10+	-
Classroom	348	177	177	140	120	104	30	6+	-
U-Shape	-	60	60	50	50	30	25	8+	-
Boardroom	-	-	-	-	-	-	30	12+	24
Dinner Dance	520	177	177	160	273	172	-	-	-
Exhibition	100	50	50	25	40	30	-	-	-
Ceiling Height (M)	2.85 (3.5 max)	2.85 (3.5 max)	2.85 (3.5 max)	2.85 (3.5 max)	2.55 (3.2 max)	2.55 (3.2 max)	2.55	2.55	3.4
sq m	674	342	332	296	315	273	70	18+	49

*For full seminar suite capacities and configurations please speak to your event coordinator.

Room Hire is chargeable - Please contact Events Team.

DAY DELEGATE PACKAGES

COMPLETE DAY DELEGATE PACKAGE

Minimum numbers will apply

- Full day hire of 1x main conference suite
- Arrival tea, coffee & biscuits
- Mid-morning tea, coffee & biscuits
- 2-course lunch served with tea, coffee & orange juice
- Afternoon tea, coffee & mini treats
- Data projector, screen & flip chart
- 1x microphone & PA system
- Iced water, stationery & mints
- Complimentary WiFi

£48.00 per person

BUDGET DAY DELEGATE RATE

Minimum numbers will apply

- Full day hire of 1x main conference suite
- Arrival tea, coffee & biscuits
- Mid-morning tea, coffee & biscuits
- Sandwich lunch served with crisps, fresh fruit & orange juice.
- Afternoon tea, coffee & biscuits
- Data projector, screen & flip chart
- 1x microphone & PA system
- Iced water, stationery & mints
- Complimentary WiFi

£39.50 per person

**All rates include VAT*



CATERING OPTIONS

FULL ENGLISH BREAKFAST MENU

Locally sourced back bacon
Locally sourced sausage or vegetarian sausage
Field mushroom
Grilled tomato
Baked beans
Potato rosti
Scrambled eggs
Granary toast
Freshly brewed tea & coffee

£12.95 per person

LIGHT BREAKFAST MENU

Bacon, sausage or egg rolls

£5.75 per person

Freshly brewed tea coffee & with selection of mini Danish pastries

£5.95 per person

Selection of fresh fruit platter

£5.50 per person

**All rates include VAT*

Example menu – please contact your Event Co-ordinator for latest menus.

CONTINENTAL BREAKFAST

(available for breakfast meetings until 11.30am)

Croissants
Selections of jams
Mini pain au chocolate
Smoked gammon ham
Cheddar cheese slices
Fresh fruit platters
Fruit compote, Greek yoghurt, granola
Tea and coffee
Fruit juice selection

£12.95 per person

REFRESHMENTS

Freshly brewed tea & coffee
£2.30 per person

Freshly brewed tea & coffee
with homemade biscuits
£3.25 per person

Jug of fresh orange juice
£7.50 per jug



HOT FORK BUFFET

MAIN COURSE

Chicken Balti curry, cumin rice, mango chutney & mini poppadum

Chickpea & roasted vegetable Balti curry, cumin rice, mango chutney & mini poppadum (v)

West Country beef lasagne, garlic bread & house mixed salad

Grilled Mediterranean vegetable lasagne, garlic bread & house mixed salad (v)

Chicken & smoked ham hock puff pastry pie, roasted potatoes & buttered peas

Roasted onion, potato & smoked cheese homity pie, buttered peas (v)

Grilled salmon, new potatoes, fennel & dill, cherry tomatoes & salsa verde

All main courses served with local bread and butter

£25.00 per person

COLD DESSERTS

Traditional lemon tart, orange gel, white chocolate crumb

Passion fruit cheesecake, honeycomb & pineapple crisp Lime posset, roasted coconut & coco nibs

Fresh cream profiteroles, chocolate & salted caramel sauce

Dark chocolate mousse, confit orange, candy pistachio

Treacle tart, Devon clotted cream & fresh raspberries Cherry

frangipane tart, vanilla baked custard, toasted almonds

£8.50 per person

**All rates include VAT*

Menu subject to change - gluten free, dairy free and vegan options available. Please contact our events team.

BOWL FOOD

Chickpea & roasted vegetable korma curry, cumin rice (v)

Honey roasted chipolata, potato and roast apple mash, sage gravy

Chicken laksa with kefir lime, rice noodles, coconut, sugar snap peas

Salmon katsu curry, jasmine sticky rice, pickled ginger & coriander

Smoked tofu, red quinoa, sweet pickled peppers, toasted almonds, orange & caper dressing (v)

Wild mushroom & Dijon stroganoff, wild rice, roasted broccoli (v)

Chicken and tarragon ravioli, garlic mushrooms, spinach, chicken velouté

Lamb & mint koftas, couscous, cabbage slaw, rose harissa dressing

Chargrilled chicken breast, caesar dressing, baby gem, croutons, cherry tomatoes, parmesan cheese

£21.00 per person



BUFFET MENUS

GRAZING PLATTER

Parma ham, smoked chicken breast, buffalo mozzarella, beetroot hummus, sun-dried baby tomatoes, chilli jam, mixed olives, marinated aubergines & courgettes, crusty bread

£16.00 per person

SUPERFOOD SALAD

(supplement for grilled chicken breast)

Roasted red pepper quinoa, lemon dressed edamame beans, marinated beetroots, mixed bean salad, tender stem broccoli, cucumber, raisins & feta salad, lemon & mint yoghurt (v)

£15.00 per person

PICNIC HAMPER

Mini selection of granary sub rolls:

Coronation chicken, golden raisin & rocket;
Smoked salmon, cucumber & cream cheese;
Egg mayonnaise & salad cress
Pork pie, onion chutney, scotch egg, English mustard dressing, cheddar cheese, grapes, celery, black olive tapenade pinwheels

£18.00 per person

BBQ BOX

Smoked beef brisket, chilli chicken fillets, chipolata sausage, brioche bun, fennel & coriander coleslaw, grilled vegetable skewer, burnt end beans, new potato & chive salad

£19.00 per person

**All rates include VAT
Menu subject to change - gluten free, dairy free and vegan options available. Please contact our events team.*

SANDY PARK CLASSIC BUFFET

Sandy Park club sandwich, ham hock terrine, chilli & pineapple chutney, pastrami & Dijon samosa, teriyaki dressing, cheese & onion roll, roasted butternut squash & pesto tartlet, beetroot hummus & crudites, sticky sweet chilli salmon lolly pop, sweet and salted popcorn

£21.00 per person

ALL WRAPPED UP MENU

Selection of wraps:

Buffalo chicken wings & sour cream

Salt and pepper squid, tomato jam

Beetroot hummus & crudites

Roasted butternut squash & pesto tartlet

Cheese & onion roll

Tortilla chips

£18.00 per person

SANDWICH LUNCH

Chef's selection of freshly made sandwiches on granary bread, hand baked crisps, fresh fruit and orange juice

£12.00 per person

BUILD YOUR OWN BURRITO

Roasted chicken, red onions & pepper refried beans & rice, flour wraps & accompaniments

£13.00 per person

MINI DESSERTS

Traditional lemon tart, orange gel, white chocolate crumb

Passion fruit cheesecake, honeycomb & pineapple crisp

Lime posset, roasted coconut & coco nibs

Fresh cream profiteroles, chocolate & salted caramel sauce

Dark chocolate mousse, confit orange, candy pistachio

Treacle tart, Devon clotted cream & fresh raspberries

Cherry frangipane tart, vanilla baked custard, toasted almonds

£6.50 per person



GETTING TO SANDY PARK

Sandy Park is conveniently located just off Junction 30 of the M5, meaning travel to us from Devon and beyond is extremely straightforward.

We are also 10 minutes away from Exeter Airport, on a main cycle route, served by both Digby and Sowton and Newcourt railway stations and within easy reach of Exeter City Centre.

SANDY PARK HOTEL

In early 2022, the new, state-of-the-art Sandy Park Hotel will open its doors, offering customers and clients of Sandy Park a fabulous location to base themselves whilst with us.

The 250-bed, eight-story development will provide leisure facilities on the entry floor, which also includes a lounge, a snack and coffee bar, as well as a purpose-built business centre.

Also included in the designs are a rooftop cocktail bar, together with a Fish & Steak restaurant that boasts picturesque views down the River Exe Estuary and towards Torbay.

VISITING BY CAR

There is an on-site car park at Sandy Park with over 500 spaces. We work with Premier Park who operate an Automatic Plate Recognition (ANPR) system whereby all vehicle registrations will be captured on arrival and departure by camera. All visitors will need to enter their vehicle registration number at one of the machines in the car park. There is no need to display the receipt in the vehicle once paid. Visitors can top up at a machine or by RingGo if overstayed.

Find out more at www.sandypark.co.uk

VISITING BY BICYCLE

Sandy Park is on a main cycle route and can be easily reached from all directions. There are cycle racks on site where you can leave your bike.

There is no on-site parking on match days. Find out more about getting to Sandy Park on Exeter Chiefs match days on the website.

VISITING BY BUS

South West Falcon (Plymouth to Bristol) This is a 24/7 coach service providing connections between Plymouth, Exeter, Taunton, Bristol Airport and Bristol City Centre. Tickets can be pre-booked via megabus.com or bought direct from the driver on the day of travel. Visit www.swfalcon.com to find out more.

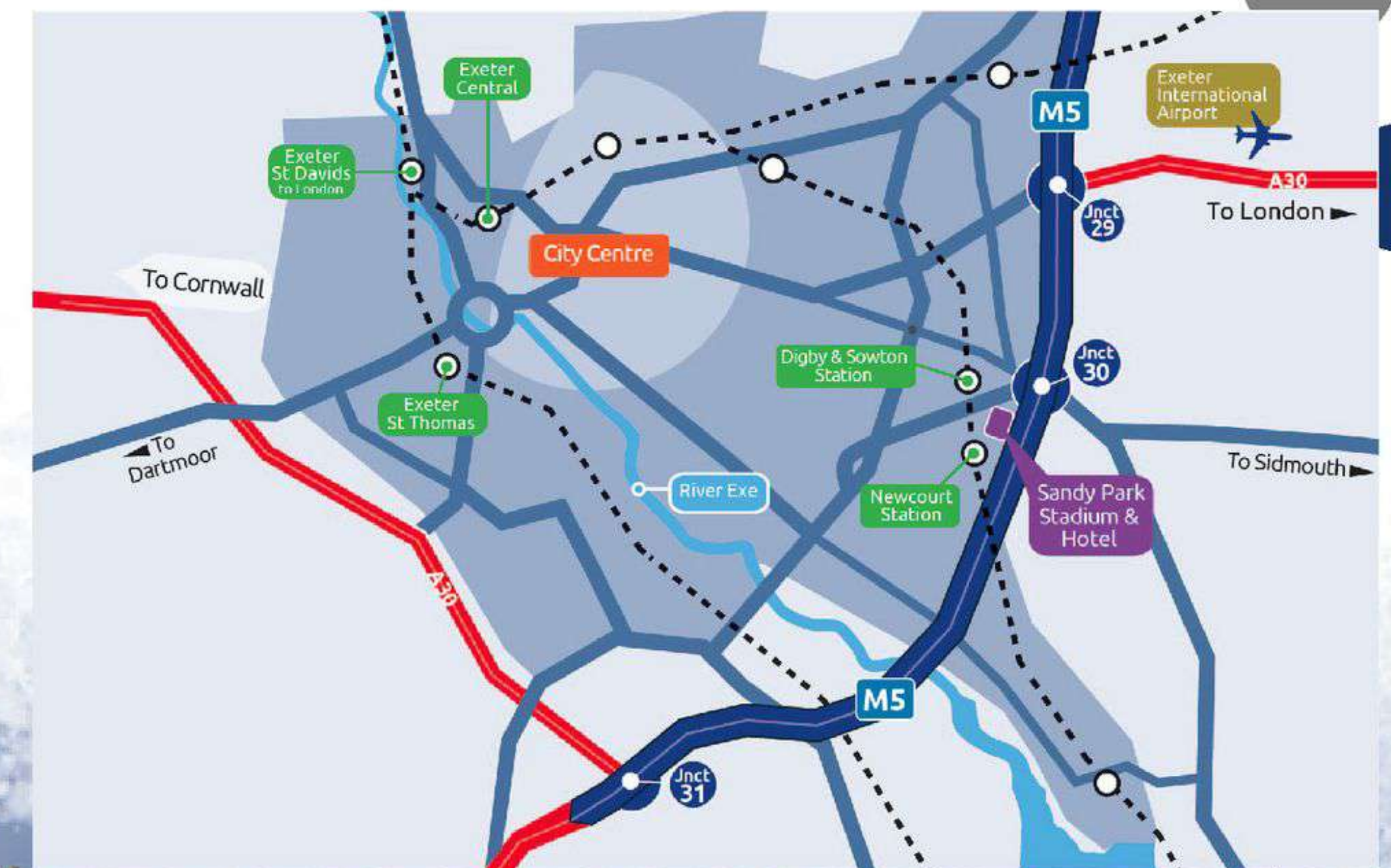
Service 9/9A (Exeter to Sidmouth) Buses from Exeter city centre run up to every half hour, 7 days a week.

VISITING BY RAIL

Sandy Park has two rail stations in close proximity, both on the Avocet Line between Exeter and Exmouth. Travellers to and from Exeter are advised to alight at Digby & Sowton, whereas those travelling to or from Exmouth should use Newcourt. Both stations are clearly signposted from Sandy Park and are approximately a 15 minute walk away.

Alternatively, Exeter's two main rail stations, Exeter St David's and Exeter Central are located approximately 5 miles from Sandy Park. Taxis are available at both stations with an approximate journey time of 15 minutes.

**All prices in this brochure are correct as of September 2021.*



CONFERENCES & MEETINGS

WWW.SANDYPARK.CO.UK | 01392 427427 | events@sandypark.co.uk

